



sales@orientinsulators.com
<http://www.suspensioninsulators.com>

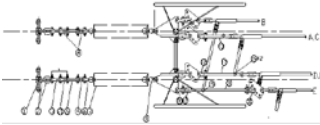
Chapter 2

Insulator String

2.3 Electrical Fittings for Insulator String

By Orient Power

Electrical Fittings for Insulator String



Orient Power

sales@orientinsulators.com

<http://www.suspensioninsulators.com>

Types of insulator string:

- Suspension insulator string
- Tension / strain insulator string
- Jumper insulator string

Electrical fittings for insulator string:

Insulator string or composite insulators need to be connected with electrical fittings and then connect them with the power towers at ground end and conductors at live end.

Types of electrical fittings:

- Electrical link fittings

Ball eye, ball clevis, socket eye, socket tongue, socket clevis, socket thimble, anchor shackle, twisted shackle, twisted strap, clevis eye, twisted strap, eye chain link, chain link, clevis tongue, extension link, U-bolt, adjusting plate, yoke plate, turnbuckle

- Suspension clamps

Suspension clamp U bolt type

Preformed armour grip suspension clamp

- Strain clamps

Strain clamp for ACSR, AAAC, steel wire

Hydraulic compression type

Deadend bolted type

Material for electrical fittings:

- Aluminium alloy
- Hot dip galvanized, HDG iron
- Steel
- Stainless steel
- Copper

Coupling size of electrical fittings:

16mm, 20mm, 24mm

Mechanical failing load strength:

70KN, 100KN, 120KN, 160KN, 210KN, 250KN, 300KN, 420KN, 500KN